

Waveform Monoradial



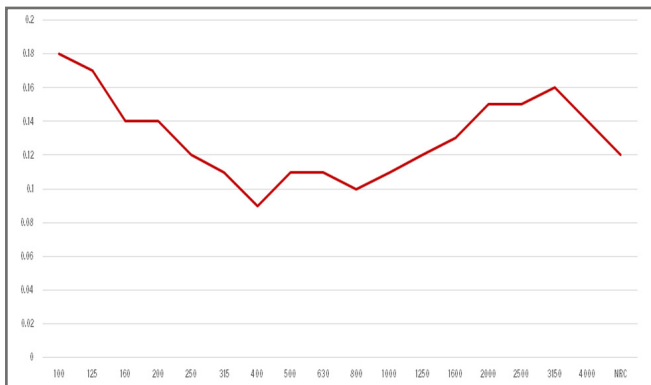
Overhead canopies are used in auditoriums to blend the direct and reflected sound and either increase intelligibility or enhance musical clarity and intimacy. Typically, canopy arrays are used instead of a solid ceiling to provide needed early reflections, while maintaining a desired reverberation time. Often, flat panel arrays are used for economy. However, flat panel arrays can potentially provide non-uniform scattered sound, due to the lack of scattering from gaps between the panels. One approach to help reduce this problem is to utilize shaping to provide diffusion. The simplest approach is a single curvature panel called the Monoradial. The Monoradial is typically used to provide longitudinal (front-back) scattering to help minimize the problems from flat panels. RPG offers the Monoradial in Class 0 Glass Reinforced Gypsum and wood.

Performance

The graph at the left shows the random incidence absorption, diffusion and correlation scattering coefficients.

Installation

Installation is simple using integral metal hair pin connectors. Simply attach engineered cables supplied with units.



Frequency	Diffusion Coefficient
100	0.18
125	0.17
160	0.14
200	0.14
250	0.12
315	0.11
400	0.09
500	0.11
630	0.11
800	0.1
1000	0.11
1250	0.12
1600	0.13
2000	0.15
2500	0.15
3150	0.16
4000	0.14
NRC	0.12

