

Modex Corner

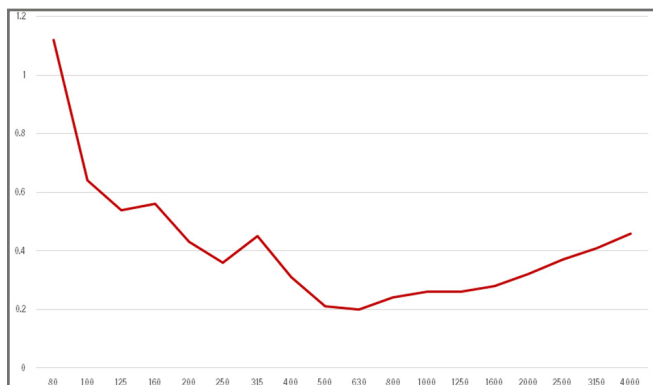


The Modex Corners are low frequency membrane sound absorbers designed to fine tune the modal distribution in a small room such as a studio control or music listening room. Designed to sit into a corner, the tuning frequencies available for Modex Corners are 40, 63 and 80Hz. The units are designed to cover approximately 1/3 octave above and below the tuning frequency.

Modex Corners can be easily and quickly mounted into a corner using the provided corner mounting bracket. With a flat bottom, they can also sit on a level floor and stack up to 3 high. See details below under the Drawings tab.

Home Theaters and Dedicated Listening Rooms often exhibit poor low frequency response with significant emphasis at modal resonances. This is especially true when they are sonically well isolated, due to massive boundary construction. Porous surface absorption is ineffective at these long wavelengths, resulting in very low absorption efficiency. RPG solved this dilemma by developing a unique membrane system that converts the high sound pressure fluctuations typically found in corners into selective absorption in the modal frequency range. The corner application also makes it practical when there is limited space to make acoustical improvements.

Small rooms like Home Theaters and Dedicated Listening Rooms often suffer from low frequency modal problems. Absorption at these frequencies requires a high absorption efficiency and significant surface area. Since small rooms do not offer the needed space, the absorption efficiency must be optimized.



Frequency	Absorption Coefficients
80	1.12
100	0.64
125	0.54
160	0.56
200	0.43
250	0.36
315	0.45
400	0.31
500	0.21
630	0.2
800	0.24
1000	0.26
1250	0.26
1600	0.28
2000	0.32
2500	0.37
3150	0.41

